



# Changes to how we make NDIS plans

February 2026

Easy Read version



**ndis**

[ndis.gov.au](https://www.ndis.gov.au)

## How to use this document



We are the National Disability Insurance Agency (NDIA).

We wrote this document.



We wrote some words in **bold**.

We explain what these words mean.

There is also a list of these words on page 14.



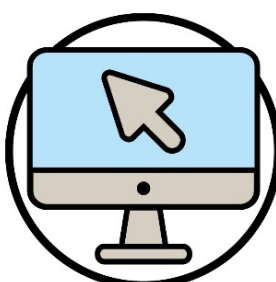
You can ask someone you trust for support to:

- read this document
- find more information.



This is an Easy Read summary of our email.

It only includes the most important ideas.



You can find this information on our website.

[www.ndis.gov.au/new-framework-email](http://www.ndis.gov.au/new-framework-email)

## What's in this document?

What is changing? 4

---

What do you need to know right now? 8

---

How will these changes better support participants? 9

---

How can you have your say? 11

---

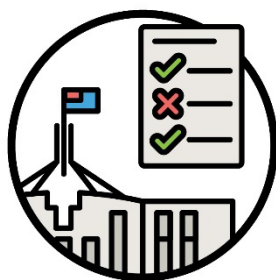
More information 12

---

Word list 14

---

## What is changing?



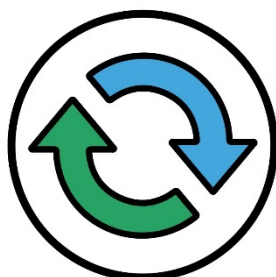
The Australian Government is making some changes to the National Disability Insurance Scheme (NDIS).



These changes will help make sure NDIS plans are:

- fairer
- easier to use.

## NDIS plans



The Australian Government is changing the way we make **NDIS plans**.

Your NDIS plan has information about:



- you and your goals
- what supports you need
- what the NDIS will pay for.



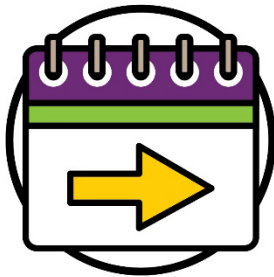
From the middle of this year, we plan to start using this new way of making NDIS plans.



We will start using the new way of making NDIS plans only with some **participants** to start off.



Participants are people with disability who take part in the NDIS.



In the future everyone will use the new way of making NDIS plans.

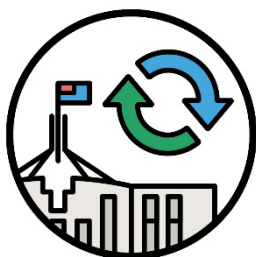


We will let you know when you have to start using the new way of making NDIS plans.



NDIA staff members will make decisions about NDIS plans.

## Support needs assessment



The Australian Government is making changes to add a **support needs assessment** for NDIS plans.



Support needs assessments help us work out:

- how a person's disability affects their life
- what supports a person needs.



A support needs assessment is done by an NDIA worker.



NDIA workers have to do certain training to be able to do a support needs assessment.



The information we get from the assessment will help us create a fairer NDIS plan.



This will help us make decisions the same way for all participants.

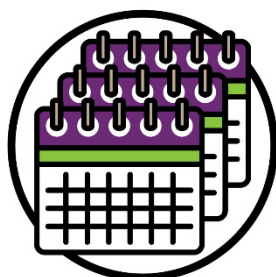
## What do you need to know right now?



Participants don't need to do anything right now.



NDIS plans will stay the same until we let participants know their plan is changing.



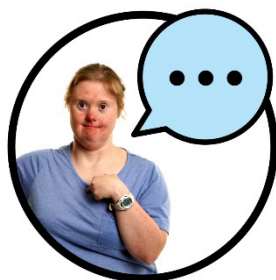
We will give participants plenty of time to get ready before anything changes for them.



Children **younger than 18 years old** will not be part of these changes for now.

## How will these changes better support participants?

Changes to how we make NDIS plans mean participants will:



- have more time to explain their needs in a way that works for them



- get an NDIS plan that is easier to use in different ways.



The changes will make sure that when we make NDIS plans, we focus on what:

- a participant can do
- support a participant needs.



The changes will also make sure our rules about how we make decisions are clearer for everyone.

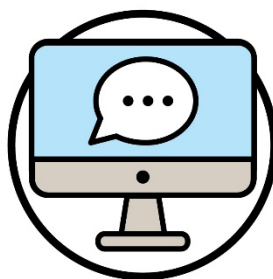


Participants will still be able to ask for someone to check a decision we make about their NDIS plan.

## How can you have your say?



You can have your say about these rules until **6 March 2026**.



You can share your thoughts on the Department of Health, Disability and Ageing's website.

[consultations.health.gov.au/ndis/nfp-public-consultation](https://consultations.health.gov.au/ndis/nfp-public-consultation)

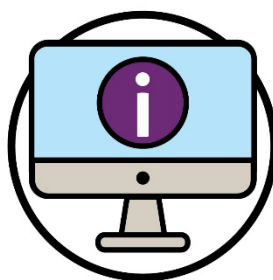


Participants can also help test the new way of making NDIS plans by taking part in workshops.



Participants can sign up for these workshops on our website.

[engage.ndis.gov.au/projects/new-framework-planning-pool](https://engage.ndis.gov.au/projects/new-framework-planning-pool)

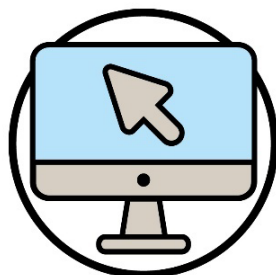


You can find more information about changes to the NDIS on our website.

[www.ndis.gov.au/about-us/improving-ndis](https://www.ndis.gov.au/about-us/improving-ndis)

## More information

For more information about this document, please contact us.



You can visit our website.

[www.ndis.gov.au](http://www.ndis.gov.au)



You can call us.

1800 800 110



Follow us on Facebook.

[www.facebook.com/NDISAus](http://www.facebook.com/NDISAus)



Follow us on Instagram.

[@ndis\\_australia](https://www.instagram.com/ndis_australia)



Follow us on LinkedIn.

[au.linkedin.com/company/  
national-disability-insurance-agency](https://au.linkedin.com/company/national-disability-insurance-agency)

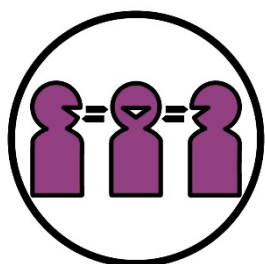
## Support to talk to us



You can talk to us online using our webchat feature at the top of our website.

[www.ndis.gov.au](http://www.ndis.gov.au)

If you speak a language other than English, you can call:



Translating and Interpreting Service (TIS National)

131 450

If you have a speech or hearing impairment, you can call:



TTY

1800 555 677



Speak and Listen

1800 555 727



National Relay Service

133 677

[www.accesshub.gov.au/about-the-nrs](http://www.accesshub.gov.au/about-the-nrs)

## Word list

This list explains what the **bold** words in this document mean.



### **NDIS plan**

Your NDIS plan has information about:

- you and your goals
- what supports you need
- what the NDIS will pay for.



### **Participants**

Participants are people with disability who take part in the NDIS.



### **Support needs assessment**

Support needs assessments help us work out:

- how a person's disability affects their life
- what supports a person needs.

---

The Information Access Group created this Easy Read document using stock photography and custom images.



The images may not be reused without permission.

For any enquiries about the images, please visit

[www.informationaccessgroup.com](http://www.informationaccessgroup.com).

Quote job number 6579.

**ndis**

**[ndis.gov.au](https://www.ndis.gov.au)**