

ndis

Supports you cannot spend NDIS funding on



Easy Read



Help with this document

You can get someone to help you:



- understand this document
- find more information.



Contact information is at the end of this document.

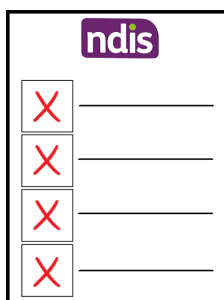
About this document

The National Disability Insurance Agency (NDIA) wrote this document.



When we use the word we, it means the NDIA.

We deliver the National Disability Insurance Scheme or NDIS.



This document is about supports that you cannot spend NDIS funding on.

Supports that you cannot spend NDIS funding on

Day to day living costs



Day to day living costs are things you might:

- buy every day
- pay for every month.



There are 8 day to day living cost areas you **cannot** spend NDIS funding on.

1. You **cannot** spend NDIS funding on accommodation and household costs.



Accommodation and household costs means costs for where you live. For example, your rent.

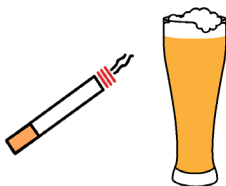
2. You **cannot** spend NDIS funding on finance and payments.



Finance and payments means money you give to someone else. For example, money you give to a church.



3. You **cannot** spend NDIS funding on food and groceries.



4. You **cannot** spend NDIS funding on lifestyle costs. For example, cigarettes and alcohol.



5. You **cannot** spend NDIS funding on clothing and beauty. For example, getting a haircut.



6. You **cannot** spend NDIS funding on travel and transport. For example, going on holiday.



7. You **cannot** spend NDIS funding on pets.

8. You **cannot** spend NDIS funding on reproductive and family related costs.



Reproductive and family related costs means costs to help you have a baby.

Supports that are not evidence based

Evidence based means something is proven to be effective and beneficial.



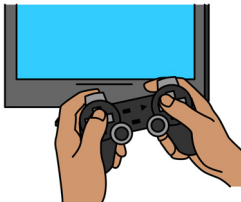
Effective means something works well.

Beneficial means something is good for you.

You **cannot** spend NDIS funding on alternative therapies.

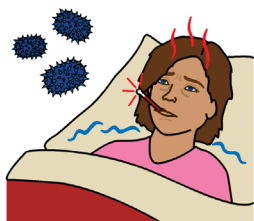
Alternative therapies include things like:

- crystal therapy
- cuddle therapy
- gaming therapy
- coaching therapy
- energy therapy.



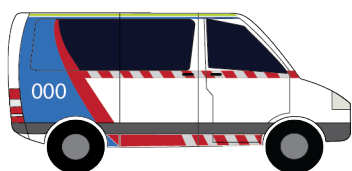
Supports related to health

You **cannot** spend NDIS funding on:



- treatment for a health problem that is not part of your disability

- medicines



- ambulance services.

Supports related to mental health

You **cannot** spend NDIS funding on:



- medicines to treat a mental health problem

- hospital mental health services



- treatment for drug and alcohol problems.

Supports related to child protection and family support

Child protection means help to keep a child safe.



Family support means therapy for families.

You **cannot** spend NDIS funding on:

- programs for parents
- babysitters
- marriage counselling.



Marriage counselling is when someone helps you with problems in your marriage.

Supports related to early childhood development



Early childhood development means how a child grows and learns new things.



You **cannot** spend NDIS funding on things like childcare.

Supports related to school education

You **cannot** spend NDIS funding on:



- school uniforms

- school fees



- school books.

Supports related to higher education and vocational education and training



Higher education means education that takes place after you finish high school. For example, university.



Vocational education and training means you learn about a job.

You **cannot** spend NDIS funding on:



- university fees
- services from someone who works at a place that gives higher education.

You **cannot** spend NDIS funding on transport to education or training if you can:



- travel on your own
- use public transport.

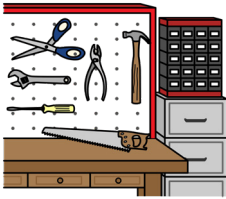
Supports related to employment

You **cannot** spend NDIS funding on:



- disability employment services

- things you need to do your job



- changes to improve access to the place where you work.



Access means everyone can use it.

Supports related to housing and community infrastructure



Community infrastructure means things that everyone can use. For example, parks and public buildings.



You **cannot** spend NDIS funding on:

- homes for people who need somewhere to live
- services for people who have nowhere to live
- changes that make it easier to move around a building.

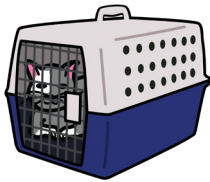


Supports related to transport

You **cannot** spend NDIS funding on:



- buses
- trains
- trams
- transport for pets and companion animals.



Companion animals are animals that help you feel calm.

Supports related to justice

Justice is when you commit a crime and must go to court.



You **cannot** spend NDIS funding on the day to day care of a person in custody. For example, a person in prison.

You **cannot** spend NDIS funding on pre-sentence reports about your mental health.



Pre-sentence reports means an expert tells a judge about your mental health.

You **cannot** spend NDIS funding on supervision and monitoring.



Supervision and monitoring means someone makes sure you do the right thing.

Supports related to aged care



Aged care means care you receive when you get older. For example, when you are 65 and older.

You **cannot** spend NDIS funding on mainstream aged care services.

Unlawful goods and services



Unlawful means something that is not allowed.

You **cannot** spend NDIS funding on something that is not allowed.

For example, you cannot spend NDIS funding on illegal drugs.

Income replacement

Income replacement means money you get if you:



- do not have a job
- cannot work.



You **cannot** spend NDIS funding on things like loan payments.

More information about this document

For more information about this document, please contact us.



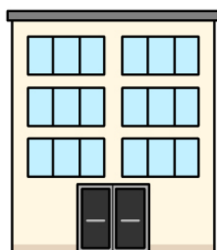
You can call us

1800 800 110



You can send us an email

enquiries@ndis.gov.au



You can visit one of our offices in person

You can find your local office on the NDIS website.

[ndis.gov.au/contact/locations](https://www.ndis.gov.au/contact/locations)

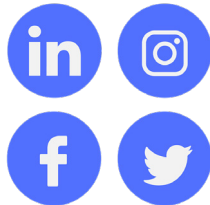
Learn more about the NDIA



Visit our website

ndis.gov.au

Follow us on our social channels



[Facebook](#), [Twitter](#), [Instagram](#),
[YouTube](#), [LinkedIn](#)

Get help to contact us

For people who need help with English



You can call the Translating and Interpreting Service (TIS).

131 450

For people who are deaf or hard of hearing



You can use the National Relay Service.

relayservice.gov.au



You can use text telephone mode (TTY).

1800 555 677



You can use voice relay.

1800 555 727

This Easy Read document was created by Scope (Aust) Ltd. in November 2024 using Picture Communication Symbols (PCS). PCS is a trademark of Tobii Dynavox, LLC. All rights reserved. Used with permission. This document must not be sold to third parties. The images must not be reused without permission. For more information about the images, contact Scope on 1300 472 673 or visit scopeaust.org.au