

?	_____
?	_____
?	_____
?	_____
?	_____

About our survey

Supports for living the way you want

NDIA and Scope



Easy English



Bold words

We have written some words in **bold and blue**.

Bold means the letters are thicker.

We write what these words mean.

You can get help with this book



You can get someone to help you

- read this book
- know what this book is about
- find more information.

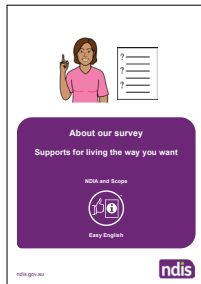


We will write contact information at the end of this book.

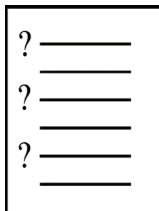
About this book



This book is from the National Disability Insurance Agency or NDIA and Scope.



This book is about what happens if you do our **survey**.



A survey is where we ask you questions to learn about a subject.

What the survey is about

This survey will tell us about

skill building supports.



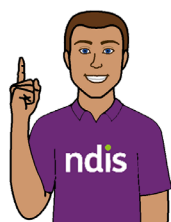
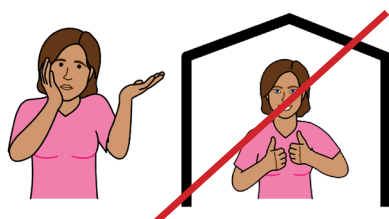
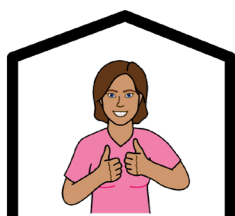
Skill building supports help you

- learn new skills
- practise new skills.



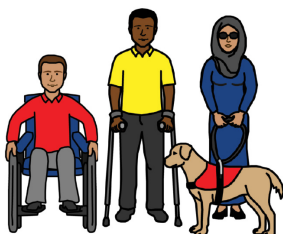
We want to know

- what skill building supports could help you to live how you want
- what makes it hard to live how you want.



Knowing more will help us do a better job at supporting people to live how they want.

Who can be part of our research?



You can do the survey if

- you have a disability
- you are asked by someone with a disability to fill out the survey for them.



It should take about 5 to 15 minutes to finish the survey.

How we will share the research

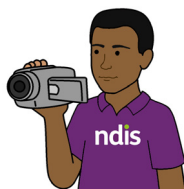


After we finish our research we will

- write a report to say what we have learnt



- write an Easy English version of the report

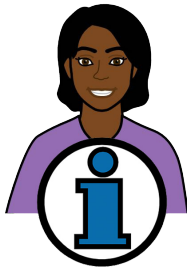


- make a video about the report



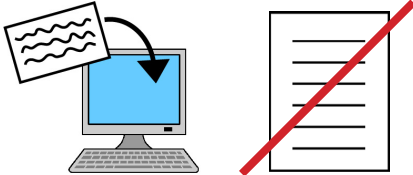
- put the report and video on our websites.

How we keep your information safe



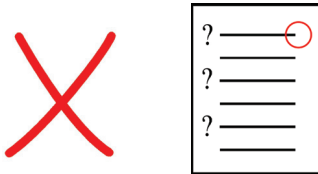
We will keep your information

- private
- safe on a locked computer.



Your email address

- will **not** be in the report

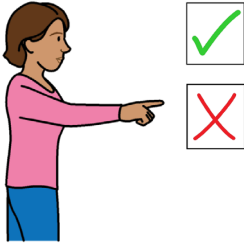


- will **not** be matched to your survey answers



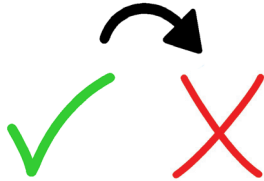
- will only be seen by our researchers.

You can choose to take part



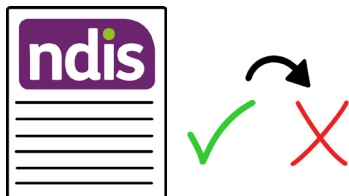
You can

- choose **not** to do the survey
- change your mind about the survey at any time.



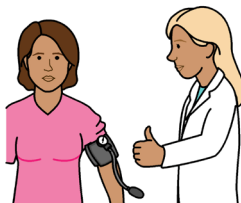
Your **NDIS funding** will stay the same

- if you say **yes** or **no** to the survey
- if you change your mind about the survey.



NDIS funding is the money that pays for

- the supports you need
- the services you need.



When you fill out the survey



You can

- fill out the survey yourself

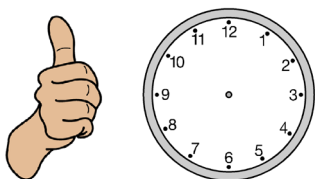


- ask someone to fill out the survey for you.



When you fill out the survey you can

- take a break when you want to



- take your time to answer the questions



- start and finish the survey on different days



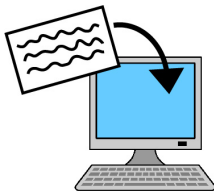
- choose to **stop** answering questions.

Where to get the survey



You can get the Easy English survey online.

<https://www.ndis.gov.au/community/have-your-say#open>



You can email us and we will send you the Easy English survey.



researchprojects@ndis.gov.au



research@scopeaust.org.au

How to fill out the survey



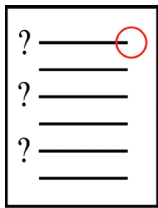
To fill out the Easy English survey online you **must**



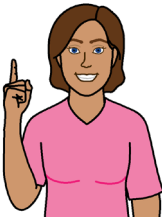
- download the Easy English survey to your computer or iPad



- type in your answers

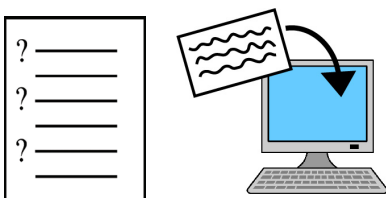


- save your answers.



To send us your survey you **must**

- make sure your answers are saved in the Easy English survey



- attach the Easy English survey to the email.

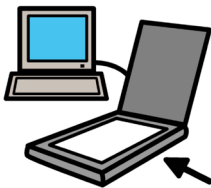


To fill out the Easy English survey on paper
you **must**

- print all of the survey



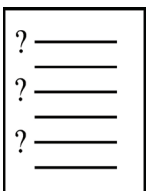
- write your answers onto the survey



- scan or take photos of all of the survey

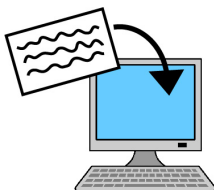


- save the scan or photos of your survey to
your computer.



To send us your survey you **must** attach the
scan or all of the photos to the email.

When you finish the survey



You can email your finished survey to
researchprojects@ndis.gov.au
or
research@scopeaust.org.au

If you are not happy with this survey



You can make a **complaint** if you

- are **not** happy with how the research happens
- do **not** feel comfortable with the questions
- do **not** feel safe.



Complaint means you say what you are **not** happy about.

If you want to make a complaint

Contact the executive officer at the Monash Health Human Research Ethics Committee.



Call 03 9594 4611



Email research@monashhealth.org

Give the officer the project number

RES 21 0000 492 A.

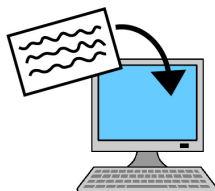
More information



For more information about the survey contact the NDIA.



Call 03 9621 6118



Email researchprojects@ndis.gov.au



If you need help to speak or listen use the National Relay Service.



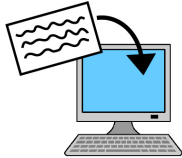
Call 1800 555 660



Website
communications.gov.au/accesshub/nrs

Give the relay officer the phone number you want to call.

The survey team



Dr Lizzie Smith

Assistant Director, NDIA Research and
Evaluation Branch

lizzie.smith@ndis.gov.au



Dr Betina Gardner

Senior Research Officer, NDIA Research and
Evaluation Branch

betina.gardner@ndis.gov.au



Dr Renata Morello

Director NDIA Research and Evaluation Branch

renata.morello@ndis.gov.au



Dr Stella Koritsas
Manager Scope Strategic Research



skoritsas@scopeaust.org.au



Dr Caroline Hart
Scope Research Officer



chart@scopeaust.org.au



This Easy English document was created by Scope (Aust) Ltd. in May, 2022 using Picture Communication Symbols (PCS). PCS is a trademark of Tobii Dynavox, LLC. All rights reserved. Used with permission. This document must not be sold to third parties. The images must not be reused without permission. For more information about the images, contact Scope on 1300 472 673 or visit scopeaust.org.au