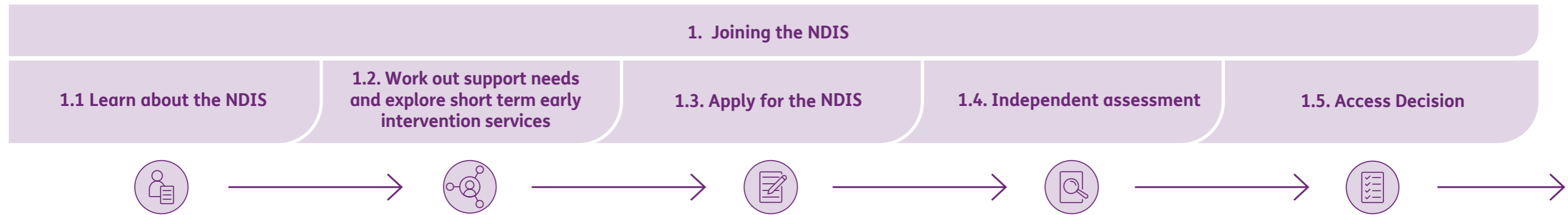


Future Access Experience for Children Under 7 (page 1 of 2)



Benefits we are working to deliver

You'll have access to more consistent information about the NDIS through multiple channels including the NDIS website, our contact centre and your Early Childhood (EC) Partner.

You'll be able to contact an EC Partner who can help connect you to mainstream supports and advise you on how the NDIS may be able to support you and your child's developmental needs.

Your EC Partner will work with you and your child to help you understand what services and supports may be available, as well as discussing goals and aspirations for your child and family.

Your EC Partner will assist you in connecting with community and mainstream supports in your area.

If required, your EC Partner will provide you with short term early intervention services with your child and family. These services will be provided by your EC Partner alongside community and mainstream supports without a need for progressing to NDIS funded supports.

If required, you will work with your EC Partner to commence an NDIS access request.

Your EC Partner will explain the NDIS and guide you through the next steps in the process, providing information on: timeframes; the independent assessment; and next steps.

While your EC Partner is assisting you in applying for the NDIS, they will ensure you remain connected to your community and mainstream supports.

Independent assessments will be free, easy to access and completed by your EC Partner.

Everyone will get access to high quality assessments that will inform more consistent and fair NDIS decisions.

You will get your child's assessment results.

Your child's independent assessment will inform whether they are eligible for NDIS funded supports.

If your child is found eligible for the NDIS, they will progress with the planning process and development of funded supports.

If your child does not meet the access requirements for the NDIS, your EC Partner will assist you in maintaining your established community and mainstream supports.

Tailored approaches for:

Children and families from culturally and linguistically diverse communities

Children with complex family support needs

Aboriginal and Torres Strait Islander Children and their families

Children and families in remote and very remote areas

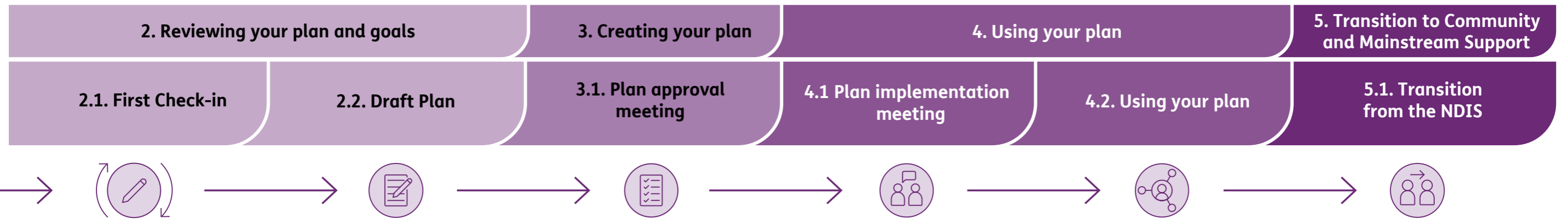
Problems we are working to solve

1. Joining the NDIS

- It can be difficult to find consistent information to understand what supports are available through both the NDIS and the community
- Completing the NDIS Application Form can be time consuming and challenging
- You'll speak to multiple people and don't know how your request is progressing

- Plan reviews take a lot of time to prepare for
- Parents have to complete a full plan review each year, which takes a lot of time and effort that could be better placed supporting their children's needs
- Parents/carers have to gather evidence of their child's needs at every plan review and re-tell their story

Future Access Experience for Children Under 7 (page 2 of 2)



Benefits we are working to deliver

If your child is eligible for the NDIS, your EC Partner will check-in with you to explain the decision and next steps.

You will be able to talk about the existing community and mainstream supports that can assist you and your child on an ongoing basis, as well as other supports available to your child.

You will get a draft plan with a draft Personalised Budget before your plan approval meeting.

Your child's plan will be easier to understand and use – with a flexible budget and a fixed budget.

Your EC Partner can explain the draft plan to you in a way that makes sense and prepares you for the plan approval meeting.

You will meet with the person approving your child's plan, who will have received specific training in how to support children in the Early Childhood Pathway.

There will be no need to negotiate each support as you will have much more choice and control over how you use your child's plan.

You will have an opportunity to discuss your child's flexible and fixed budget allocations and how you would like to access and manage your child's budget.

Plan implementation meetings with your EC Partner will focus on helping you and your child to get the most of the plan to support your child's development and their inclusion in every day life.

Your EC Partner will provide greater support to help you fully utilise your child's plan, if needed.

Plans will not have pre-determined end dates, rather they will be re-assessed depending on your child's changing needs and your family's circumstances. We know this will be more frequent for young children than older participants.

Your child's plan will be much more flexible, giving you more choice and control about how you spend your funding.

Your EC Partner will provide guidance that will help you understand and access best practice in Early Childhood Intervention to achieve the best outcomes for your child.

We will encourage you and your providers to focus on supporting your child in their natural environments.

If your child has a developmental delay and is approaching 6 years old. You will be supported by your EC partner to exit from early intervention support provided by the NDIS and continue to engage with your community and mainstream supports.

Tailored approaches for:

Children and families from culturally and linguistically diverse communities

Children with complex family support needs

Aboriginal and Torres Strait Islander Children and their families

Children and families in remote and very remote areas

Problems we are working to solve

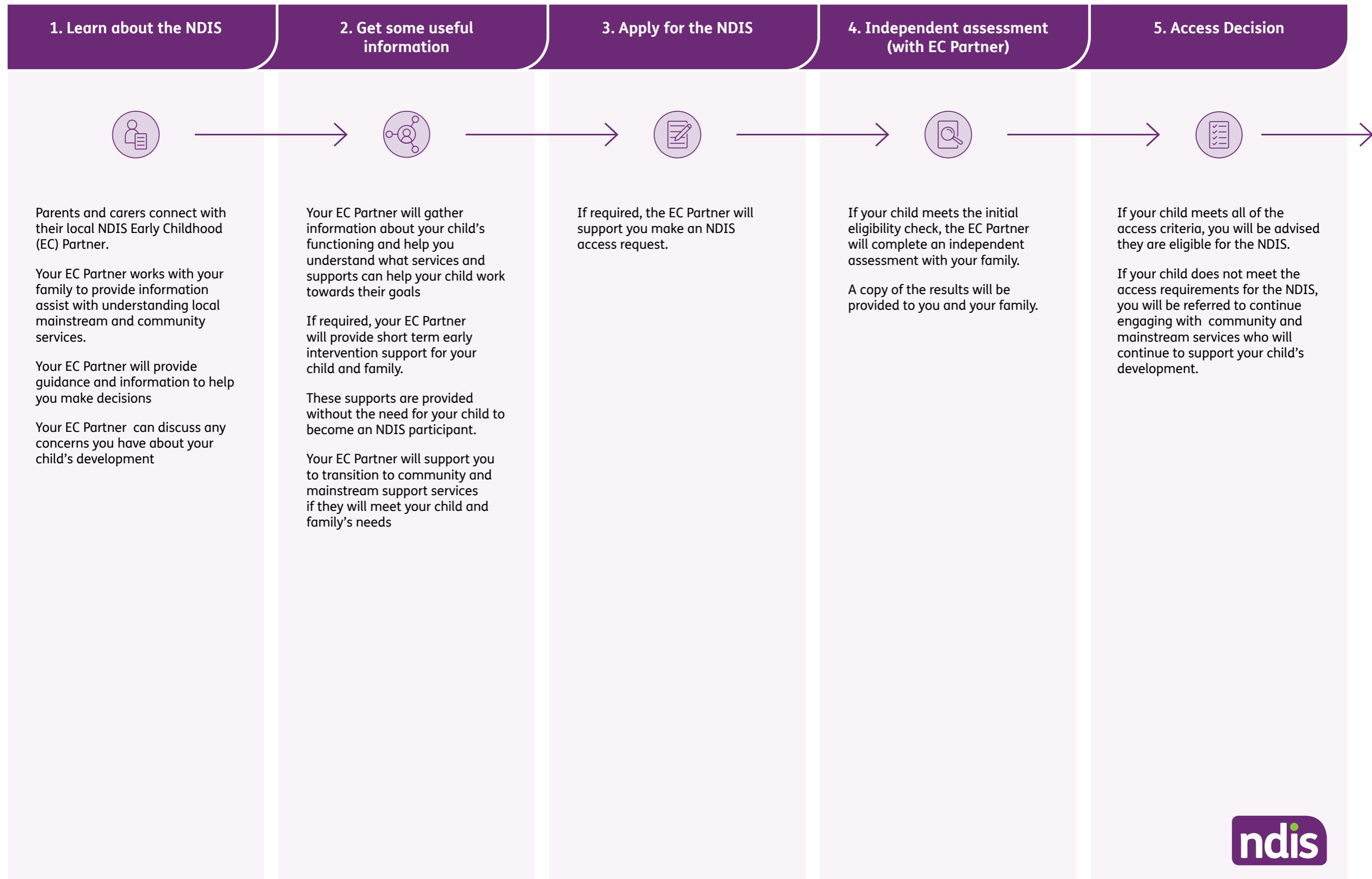
3. Creating your plan

- Planning meetings feel like a negotiation for support
- The person approving the plan doesn't may not always fully know how to support early childhood needs and you do not get an opportunity to talk to them yourself.
- The planning process can feel unnecessarily complicated to receive the support your child needs
- There can be delays with approving plans and long quote approval processes
- You don't see a draft plan before it is approved
- Approved plans are not explained

4. Using your plan

- Current plans have limited flexibility which means you can't decide how to use your plan
- Not everyone gets enough support to implement their plan well
- Plans aren't always well used because the current funding categories are too rigid and not flexible
- It is difficult to make changes to your plan

Future Access Experience for Children Under 7 — detailed overview (page 1 of 2)



Future Access Experience for Children Under 7 — detailed overview (page 2 of 2)

