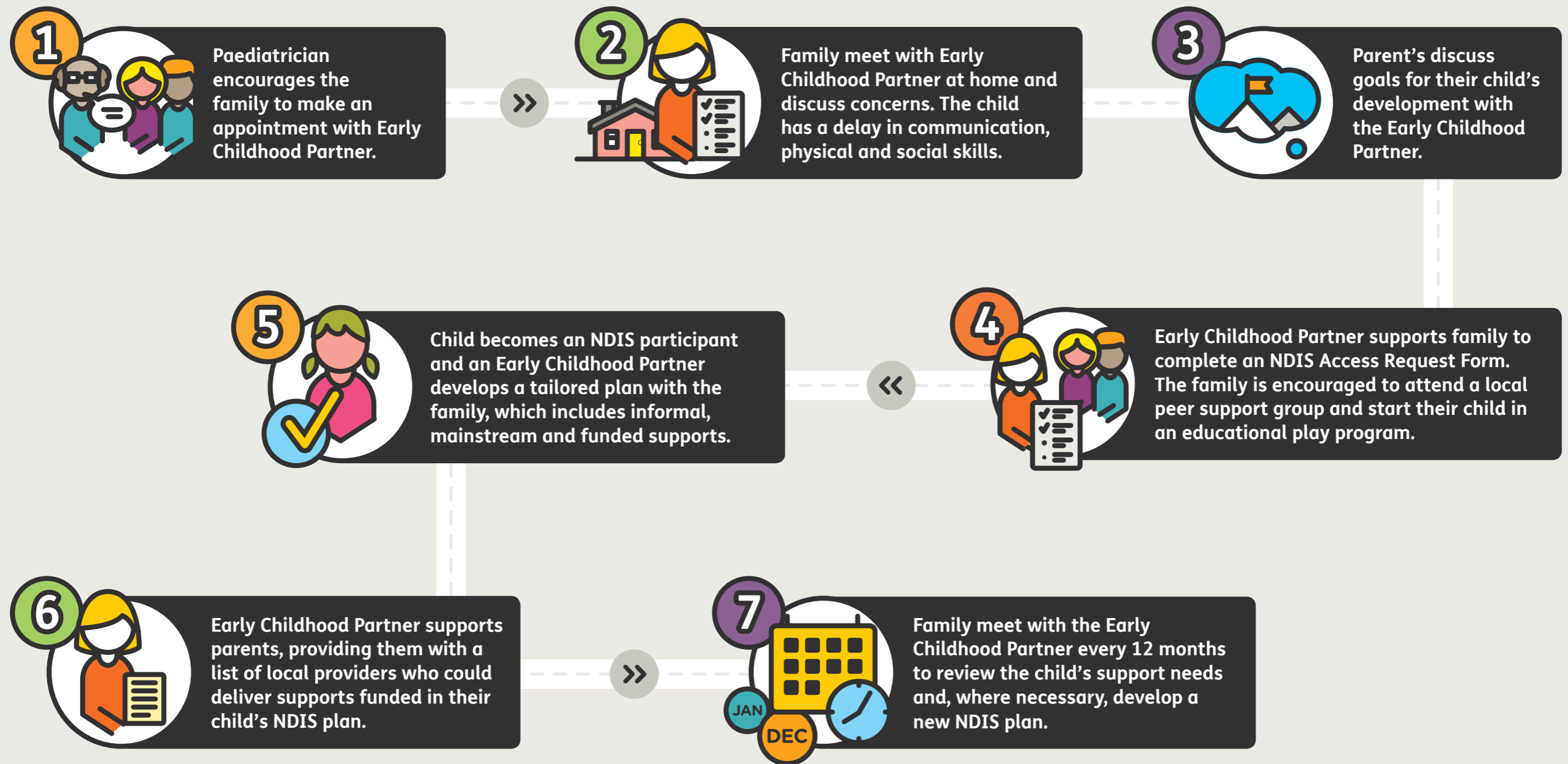


# Early Childhood Early Intervention

## Early Childhood Partner - NDIS Access





## Chloe, Cameron and Georgia's journey

### **Three-year-old Georgia and her parents, Chloe and Cameron, have just started seeing a paediatrician who referred them to an Early Childhood Partner.**

Georgia presents with a significant communication, physical and social developmental delay. She can walk short distances but fatigues easily and she's a bit clumsy on her feet.

Georgia has started speaking but she is only using one or two words so she has difficulty expressing herself. Her family are concerned and have tried various strategies to encourage her development but feel the strategies they have tried haven't worked. It's frustrating for Georgia too, who often screams at length and is unsettled during the day and night.

Chloe, Cameron and Georgia met with an Early Childhood Partner in their home where Chloe and Cameron discussed their concerns.

The Early Childhood Partner observed Georgia in her natural environment and completed a screening tool.

Chloe and Cameron identified and discussed goals for their daughter's development.

The Early Childhood Partner advised Georgia's parents in order to support her development she would benefit from longer-term supports from a multidisciplinary team through an NDIS plan. This would include regular sessions, delivering specialised early childhood intervention (with a key worker and it may include consultations/ongoing support with other members of the early childhood early intervention team as required).

The Early Childhood Partner identified and recommended an assistive technology assessment to help aid Georgia's mobility. Informal and mainstream supports were discussed with Chloe and Cameron and the Early Childhood Partner arranged to put them in touch with a local peer support group and an educational play program.

The family was also encouraged to engage with the local maternal and child health centre.

The Early Childhood Partner supported Chloe and Cameron to complete an Access Request Form, which was submitted to the NDIS.

Georgia became an NDIS Participant and the Early Childhood Partner worked with Chloe and Cameron to develop a tailored plan, which included the goals they had identified for their daughter. It also included recommendations for funded supports so Georgia could achieve the goals in her plan. It was then submitted to the NDIS for delegate consideration.

The NDIS approved Georgia's plan, which included the funding the Early Childhood Partner recommended for specialised early childhood intervention and for the assistive technology assessment.

The Early Childhood Partner supported Georgia's parents, providing them with a list of local providers who could deliver the supports funded in her NDIS plan.

Georgia and her family will meet with the Early Childhood Partner every 12 months to review her support needs and, where necessary, develop a new NDIS plan tailored to Georgia's changing support needs.