



Participant Safeguarding Policy

Easy Read summary



ndis

[ndis.gov.au](https://www.ndis.gov.au)

How to use this summary



The National Disability Insurance Agency (NDIA) wrote this summary. When you see the word 'we', it means the NDIA.



We wrote this summary in an easy to read way.

We use pictures to explain some ideas.

Bold
Not bold

We wrote some important words in **bold**.

This means the letters are thicker and darker.



We explain what these words mean.

There is a list of these words on page 18.



This Easy Read document is a summary of another document.

We call it the *Participant Safeguarding Policy*.



You can find the other document on our website.

www.ndis.gov.au/participantsafeguarding



You can ask for help to read this summary.

A friend, family member or support person may be able to help you.

What is this summary about?



This summary is about a **policy** we wrote.

A policy is a plan for how we should do things.



This policy is about how we can support people with disability to be safe.

This includes **participants**.



Participants are people with disability who take part in the NDIS.



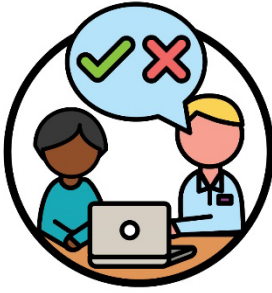
We can help keep people with disability safe by supporting them to have **safeguards**.



Safeguards are ways for people with disability to stay safe.

They might be different for different people.

Safeguards might include:



- getting support to make decisions



- building relationships with people who can help



- learning how to stay safe, using **accessible** information.



When information is accessible, it is easy to:

- find and use
- understand.



The policy also includes how we will help the **support networks** around people with disability.

A support network is all the people who support people with disability to use safeguards.

What do we explain in our policy?

We want to support people with disability
to be safe from:



- violence – when someone hurts you



- abuse – when someone treats you badly



- neglect – when someone is not helping you
the way they are supposed to



- exploitation – when someone takes
advantage of you.

The policy explains how we will:



- find better ways to support people with disability to have and use safeguards



- start working with people with disability before they are at risk.

We want to support participants to:



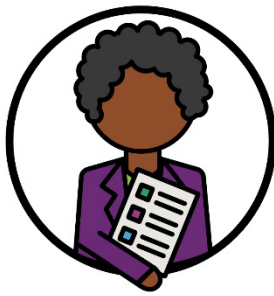
- know what they might be at risk of



- think about if they are at risk



- manage risks.



The policy also explains what people should do when they work as part of the NDIS.

And how we will provide better information about safeguards to:



- people with disability



- their support networks



- our staff.

Our principles



Principles are important ideas that we should always think about.

When we made our principles, we worked with:



- people with disability



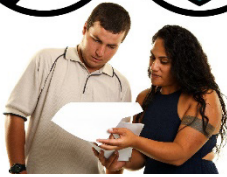
- participants



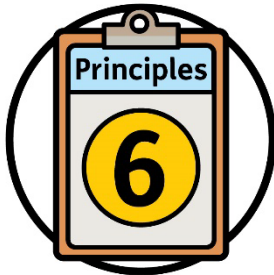
- their support networks.



Our principles will help us support people with disability to:



- think about safeguards in their lives
- make decisions about their safety.



Our policy has 6 principles.



1. Focus on the safety of people with disability



We should always think about keeping people with disability safe.



Including when we plan ways to support people with disability.



2. Support people with disability to be in control

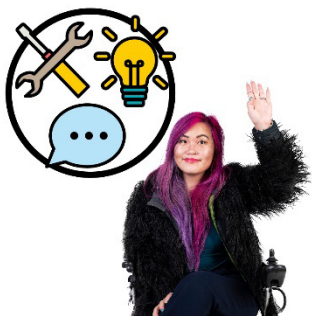
We should support people with disability to know about:



- safeguards



- risks.



And to have the skills to manage them.



3. Think about what each person needs



We should support each person to have safeguards that meet their:

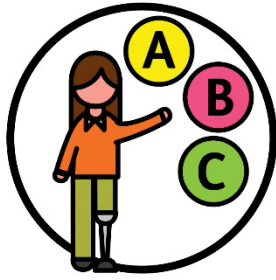
- needs
- experiences.



4. Support each person to get ready for risks



We should support people with disability to have safeguards before they are at risk.



5. Respect the decisions of people with disability



We should support people with disability to make their own decisions.

And we should respect their decisions.



6. Support people with disability to build a support network



We should support people with disability to have safeguards by:

- making connections in their community
- finding people to help them.

What we want to do



We have 4 focus areas for this policy.

They explain how we will work with people with disability.

Focus area 1



We want to find better ways to support people with disability to:

- know what they might be at risk of
- think about if they are at risk
- manage risks.

Focus area 2



We want to help workers to have the right skills and knowledge to support people with disability.



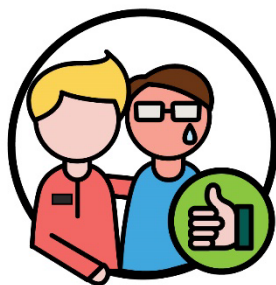
We also want to help people with disability understand risks and safeguards.

Focus area 3



We want to work with people with disability to get safeguards ready before they might need them.

Focus area 4



We want to find better ways to help people with disability if things go wrong.

How we will use this policy



We wrote the *Participant Safeguarding Implementation Plan* to explain what we will do to make the policy work.

We call it an action plan.



When we made the action plan, we heard from:

- people with disability
- participants
- their support networks.



The action plan is about what we will do to better support participants to:

- get ready for risks
- stay safe.



You can find the action plan on our website.

www.ndis.gov.au/participantsafeguarding



This includes an Easy Read version of our action plan.

More information

For more information about this summary,
please contact us.



www.ndis.gov.au



1800 800 110



Follow us on Facebook.

www.facebook.com/NDISAus



Follow us on Twitter.

@NDIS

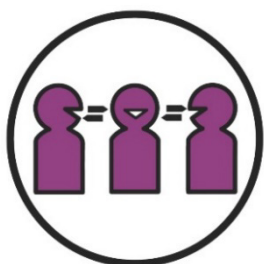
Support to talk to us



You can talk to us online using our webchat feature at the top of our website.

www.ndis.gov.au

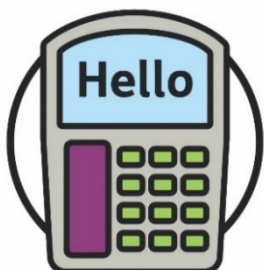
If you speak a language other than English, you can call:



Translating and Interpreting Service (TIS)

131 450

If you have a speech or hearing impairment, you can call:



TTY

1800 555 677



Speak and Listen

1800 555 727



National Relay Service

133 677

www.relayservice.gov.au

Word list

This list explains what the **bold** words in this plan mean.



Accessible

When information is accessible, it is easy to:

- find and use
- understand.



Participants

Participants are people with disability who take part in the NDIS.



Policy

A policy is a plan for how we should do things.



Principles

Principles are important ideas that we should always think about.



Safeguards

Safeguards are ways for people with disability to stay safe.

They might be different for different people.



Support network

A support network is all the people who support people with disability to use safeguards.



The Information Access Group created this Easy Read document using stock photography and custom images. The images may not be reused without permission. For any enquiries about the images, please visit www.informationaccessgroup.com. Quote job number 5163-B.



[ndis.gov.au](https://www.ndis.gov.au)